

Additional Conceptual Drawings

These drawings were presented to the 9th School Building Committee on May 16, 2017. Jonathan Levi Associates developed these concepts as potential ideas to reduce land use impact.

At this point, these alternative concepts are not under consideration by the 9th School Building Committee. They are shared here for informational purposes only.

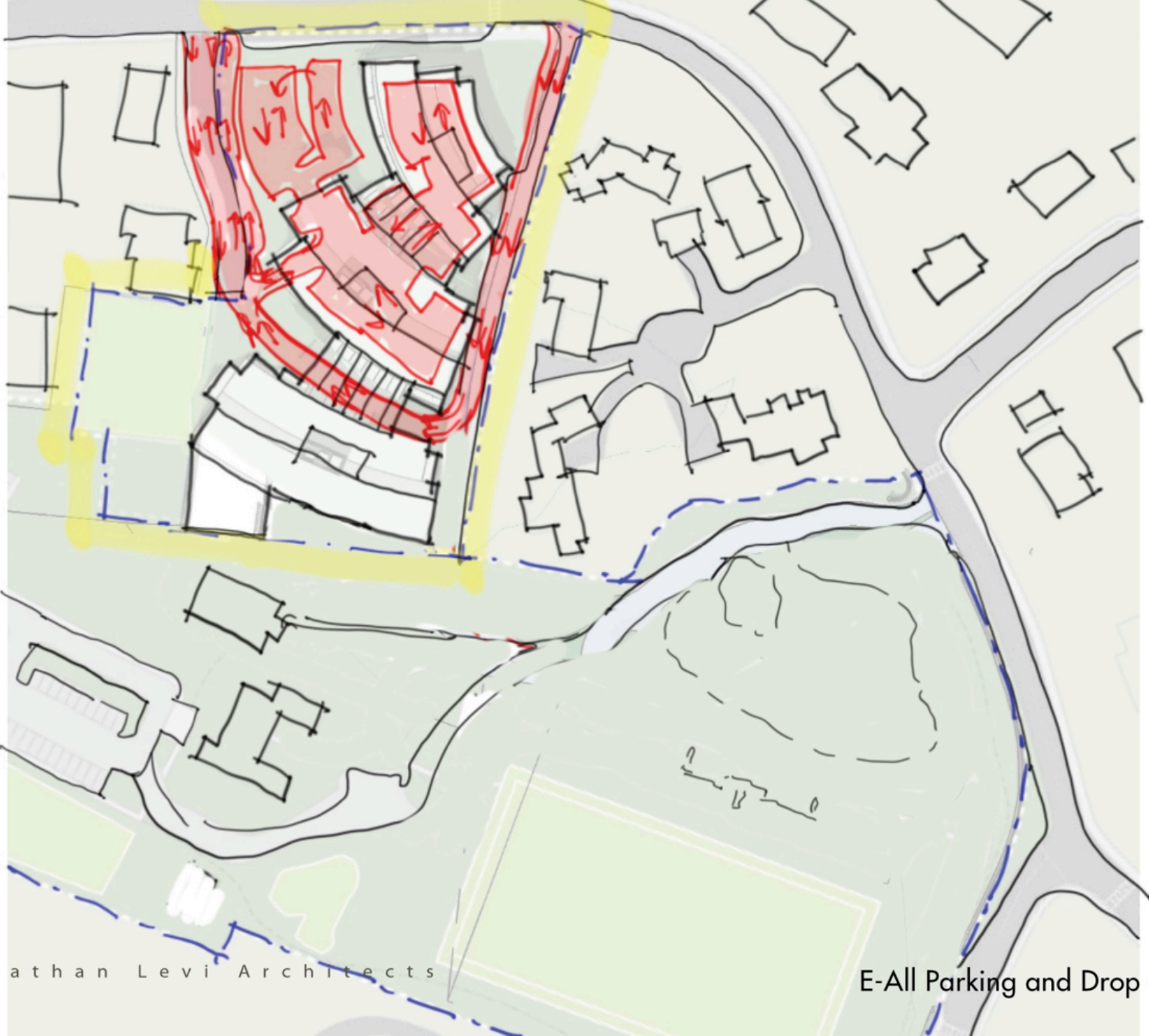




MAY 16, 2017









MAY 16, 2017

F-Baldwin North Parcel Only - 4 Stories